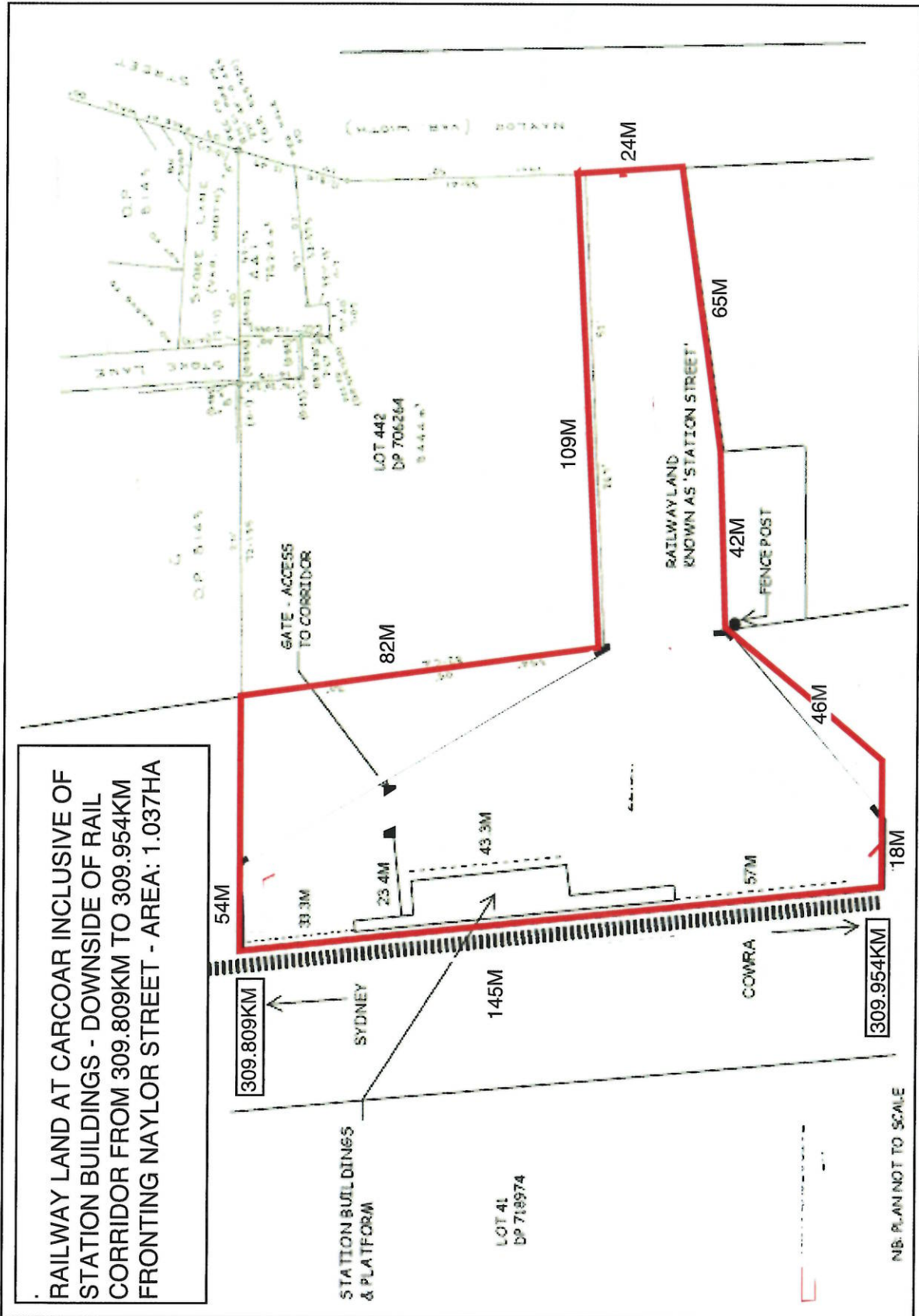


SCHEDULE B  
 "PLAN A"



RAILWAY LAND AT CARCOAR INCLUSIVE OF  
 STATION BUILDINGS - DOWNSIDE OF RAIL  
 CORRIDOR FROM 309.809KM TO 309.954KM  
 FRONTING NAYLOR STREET - AREA: 1.037HA

NB. PLAN NOT TO SCALE